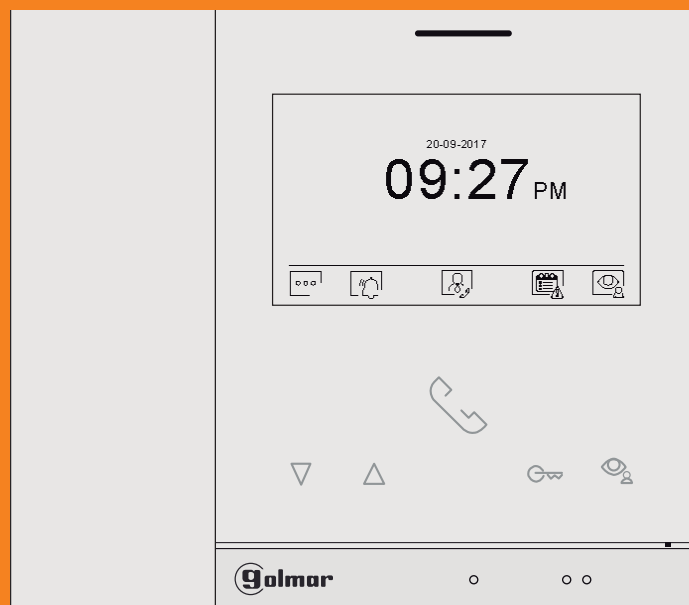




# ART 4TH/G+



# INSTALLER MANUAL

**INDEX**

---

1. Safety cautions and warnings.....	3
2. Specifications .....	3
3. Device description.....	3
3.1. Jumper description.....	4
4. Device installation.....	4
5. Initial configuration .....	5
6. Web Client.....	5
6.1. Settings.....	6
6.2. SIP Servers.....	6
6.3. About.....	7
7. Settings.....	7
7.1. Address.....	8
7.2. Privacy.....	8
7.3. Guard.....	8
7.4. Devices .....	9
7.5. SIP.....	9
7.6. Password .....	9

**1. SAFETY CAUTIONS AND WARNINGS**

The installation and setup of this equipment must be done by an authorized installer.

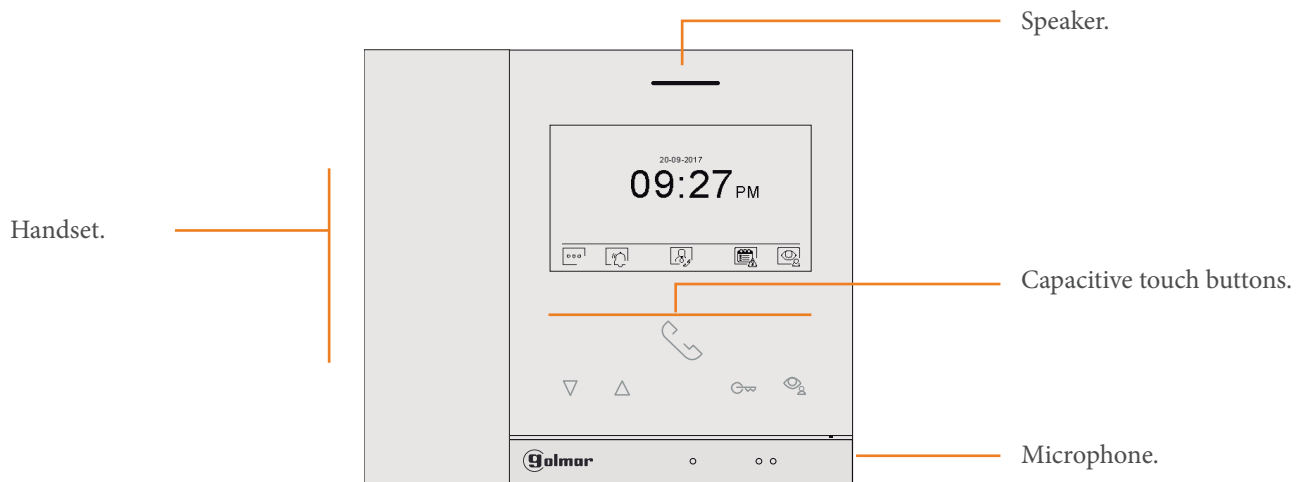
- The current regulations oblige to protect the power supply by means of a thermal magnetic circuit breaker.
- All the installation conduits must distance at least 40 cm from any other installation.
- In regards of the power supply FA-G+:
  - Do not tight with excessive strength the screws of the terminal block at FA-G+ power supply.
  - Install the power supply in a dry and secure area, protected against water drops.
  - Avoid placing the power supply close to heating sources, humid or dusty areas.
  - Do not cover the power supply ventilation openings area to assure air flow circulation.
  - To prevent damages, the power supply has to be strongly mounted. Use a DIN rail 46277 (8 DIN) to fix it.
  - To avoid an Electrical shock, do not remove the protection cover and do not manipulate the cables connected to the power terminals.

**2. SPECIFICATIONS**

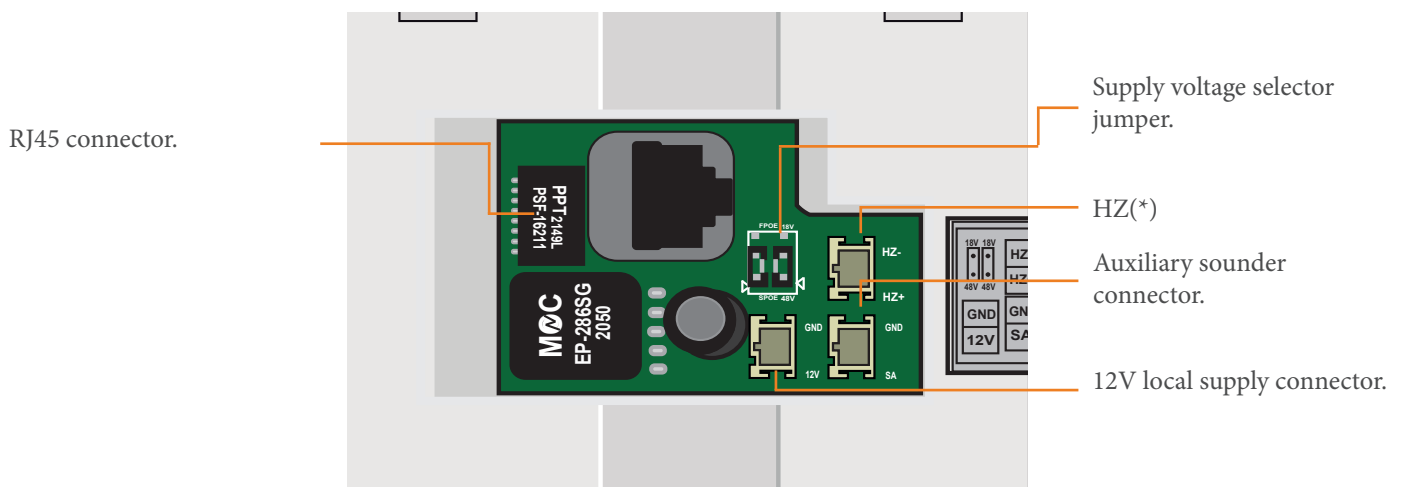
- TCP/IP video intercom system.
- Installation over existing Ethernet network (D4L-G+/POE switches are required) or in its own structure by means of fibre or UTP cable category 5 or higher.
- Up to 98 blocks for each installation.
- Up to 19 indoor panels for each block.
- Up to 799 apartments for each block.
- Up to 19 general guard units for each installation and 9 for each block.
- Up to 32 ONVIF cameras.

**3. DEVICE DESCRIPTION**

- Front side:



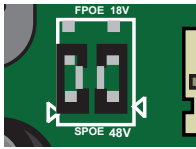
- Back side:



(\*) Refers to the apartment door bell..

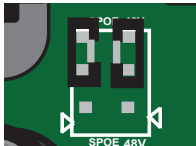
### 3.1. Jumper description

We will be able to choose which supply will be necessary for the correct operation of the device through the jumper located in the back side of the monitor in the following way:



48 V standard PoE (default position).

The device is ready to receive 48V from a standard PoE switch.



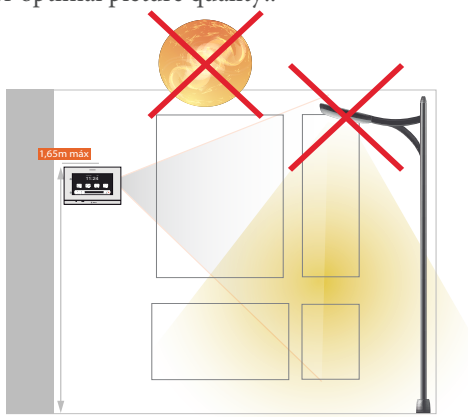
18 V.

The device will be ready to receive 18V from a D4-L-G+/PoE or from an Ethernet DCS/G+ switch.

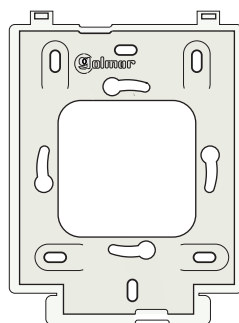
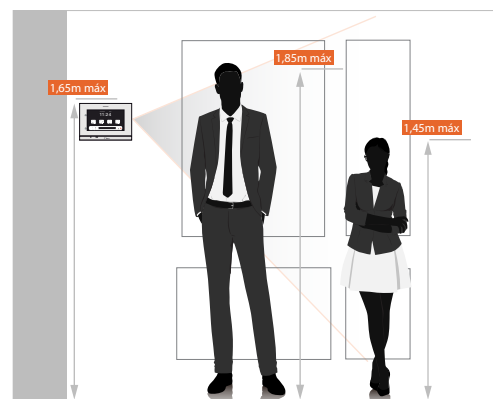
## 4. DEVICE INSTALLATION

### Monitor location

1- Avoid exposing the monitor to backlighting from light sources for optimal picture quality:



2- Place the top of the monitor at a height of 1,65m for a correct viewing of the screen:



Use the bracket so that the monitor is at the above mentioned height.

Place it on a flat surface that allows a good fit of the bracket to the wall for a correct viewing of the screen:

### Necessary elements to complete an installation:

- FA-G+ power supply for each 8 devices (door panels, monitors...).
- Do the distribution to the different devices through 4 distributed outputs D4L-G+/PoE distributors, or using 48V standard PoE switches.
- Choose 6502/G+ door panels, or a composition of modules for the Nexa panel to be able to register units in it and set the video intercom system.
- Add ART 7/G+/PCM DUAL POE y ART 7W/G+/PCM DUAL POE video units if you want the apartment unit has a PCM/G+ private call panel.
- In case of a daisy-chain distribution of the devices (IN/OUT), use DCP/G+ injectors with the FA-DC48/G+ power supply and Ethernet DCS/G+ switches in monitors.

## 5. INITIAL CONFIGURATION

Once connected the monitor to the installation, this will automatically starts and will show an initial configuration screen on which we must set the following parameters concerning to the physical location of the monitor in the installation:

**Configuración inicial ~ Initial config**

● Idioma ~ Language	English
Edificio ~ Block	0 2
Vivienda ~ Apartment	8 5 5
Monitor	1

Block where the apartment is located..

Apartment number.

Up to a maximum of 6 apartment units for each apartment..

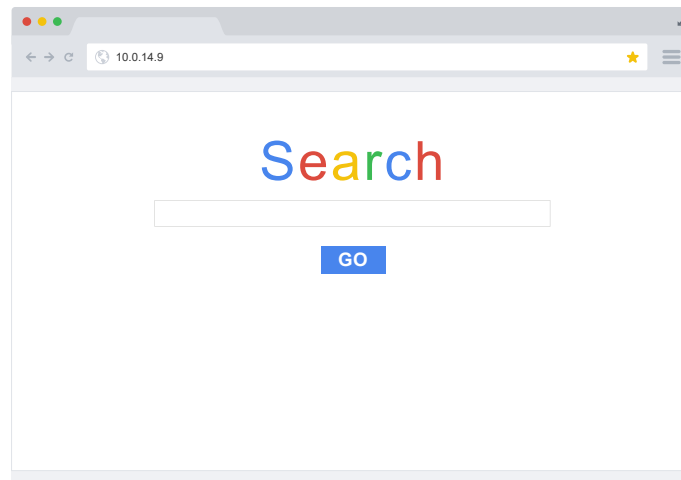
Save set configuration..

Menu navigation buttons.

## 6. WEB CLIENT

We can access the web client to do changes in the configuration or to configure its network parameters manually entering the device IP address in our web browser. If the device still having default settings, the IP addresses we must enter will be 10.0.0.254. If the device is already configured we must enter the IP address that the system automatically assigned or we manually assigned.

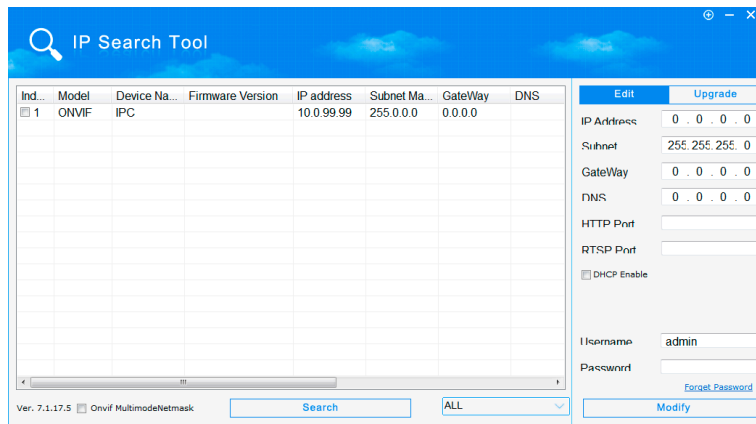
Type the IP address in the web browser:



Log in the Web Client: Thwe password to access is 888999.



If we don't remember the IP address that we assigned to the monitor, we can search for IP address in the network through search programs as "IP Search Tool".



The following describes the initial screen of the Web Client for the ART 4TH/G+ monitor:

### 6.1. Settings

Monitor language.  
Dialing code length.  
Block number.  
Apartment address.  
Apartment unit number.  
Available languages.

Settings.  
SIP.settings  
About the device.

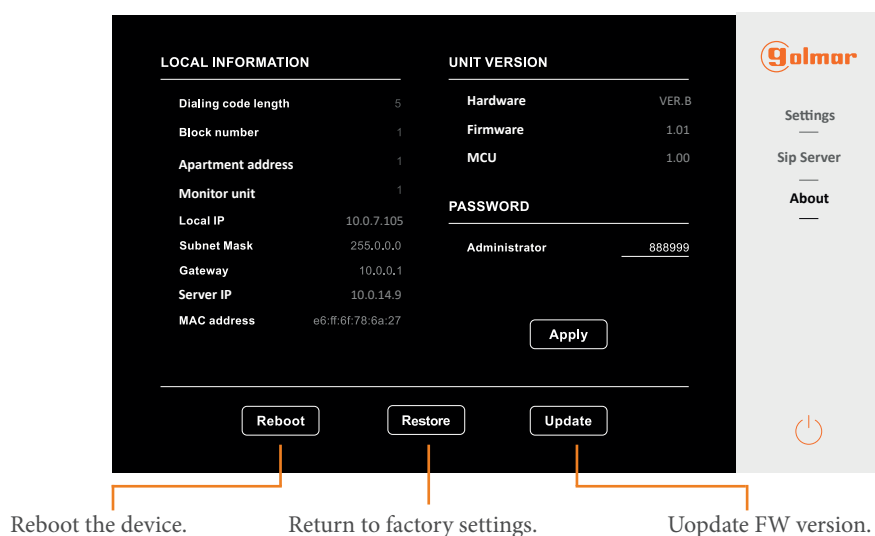
Manual assignment of network parameters.

### 6.2. SIP Servers

In the SIP servers section we will be able to include the device in the registered PABX telephone switchboard in the management panel to be able to make and receive calls through an extension assigned to the monitor from SIP devices which are included in the system.

Transmission port  
Normally is the 5060.  
Created user and password in the PABX

## 6.3. About

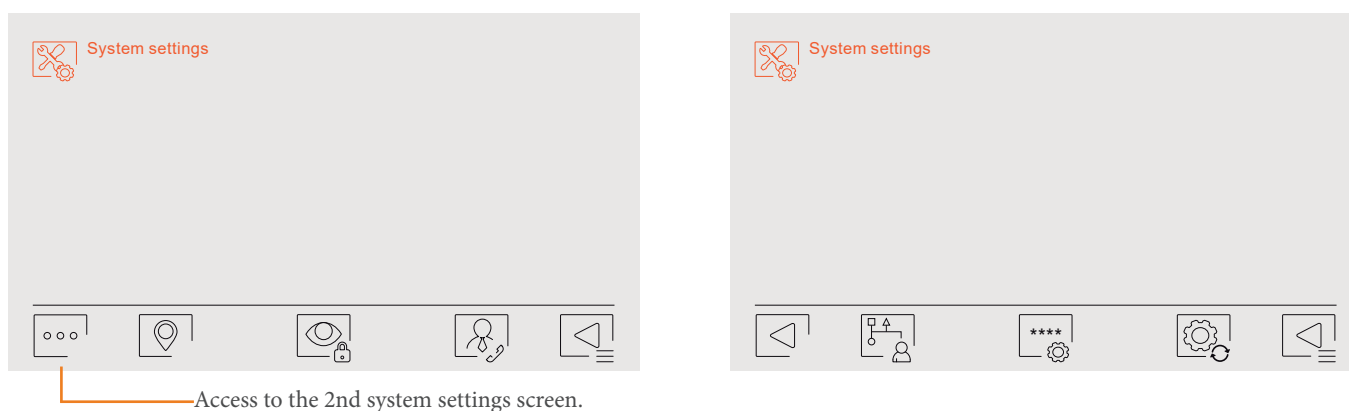


## 7. SETTINGS

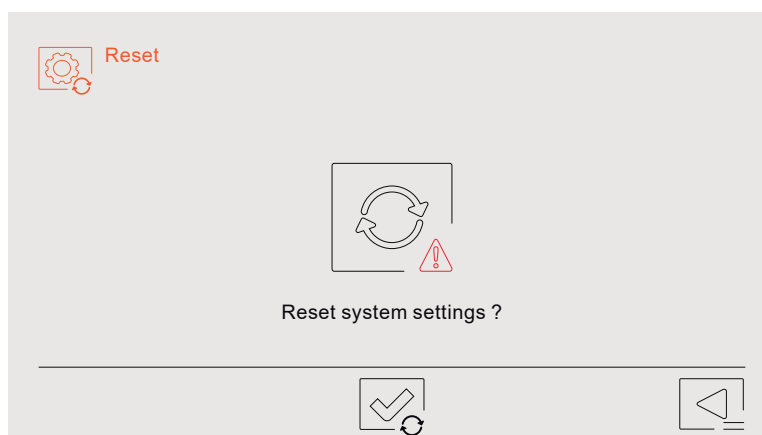
In this section of the manual we will see with detail the system settings. If you want to see other type of settings which we can access with the monitor, see the user manual of the 4.3" ART 4TH/G+ monitor that you will find in the "Downloads" tab in the website of the product.

When pressing on system settings, in the monitor will appear a screen on which you must enter the installer password to access the system settings. The installer password by default is: 2718.


Once you have access the system settings menu, the next screen will appear:

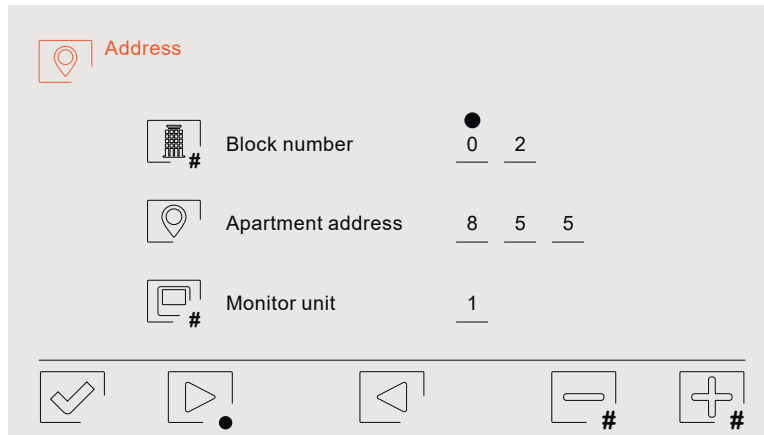


To return the monitor settings to factory values, we must press on the  icon located on the bottom right in the second system settings screen. It will appear the following screen and we must confirm the restore to factory values of the monitor settings.



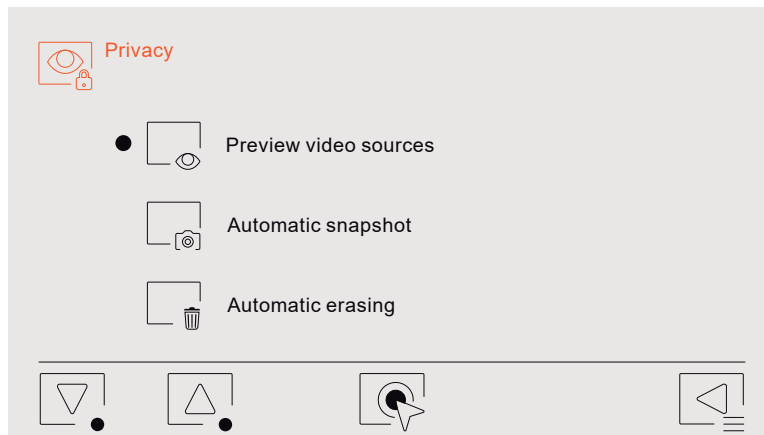
### 7.1. Address

In this section we will be able to modify the monitor address. If we change the physical address of the monitor, it will also change its network parameters. These can be assigned automatically by the system again or manually accessing the previously explained screen pressing on the  icon. We would fill in the fields in the same way as in the beginning but changing the data which have changed.



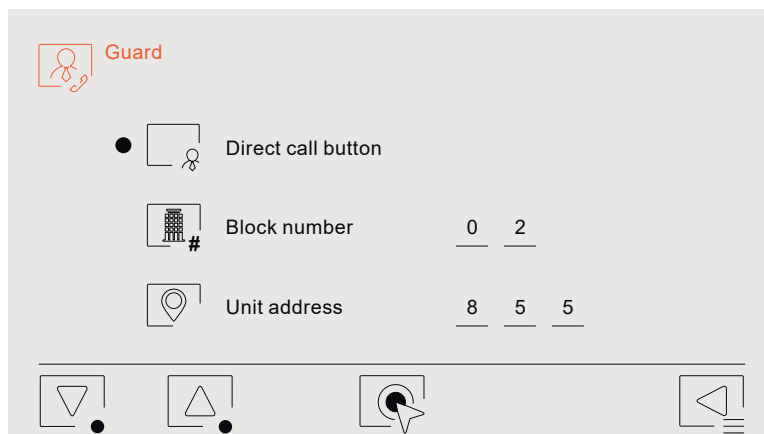
### 7.2. Privacy

In the privacy section we can enable or disable the preview of the door panel and CCTV IP cameras images which are registered in the system. It is also possible to manage the automatic snapshot when there is a call from the door panel and the automatic erasure of these images when the 30 days period set is overpassed.



### 7.3. Guard

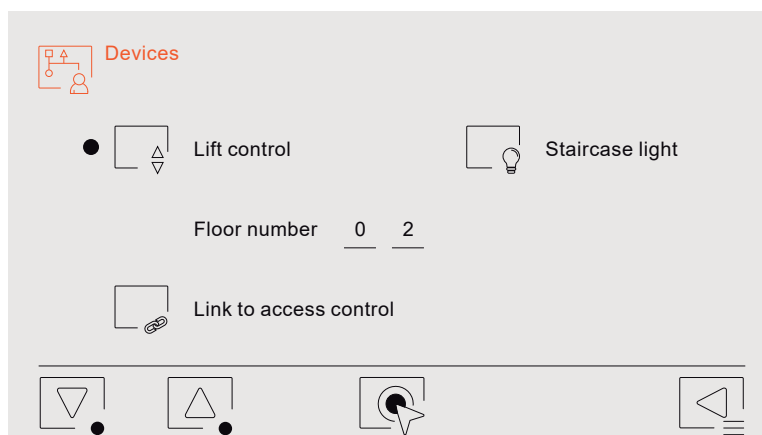
With regard to the guard unit settings, we will be able to set to which address we will call when we press the direct call to the guard icon from the main screen of the monitor.





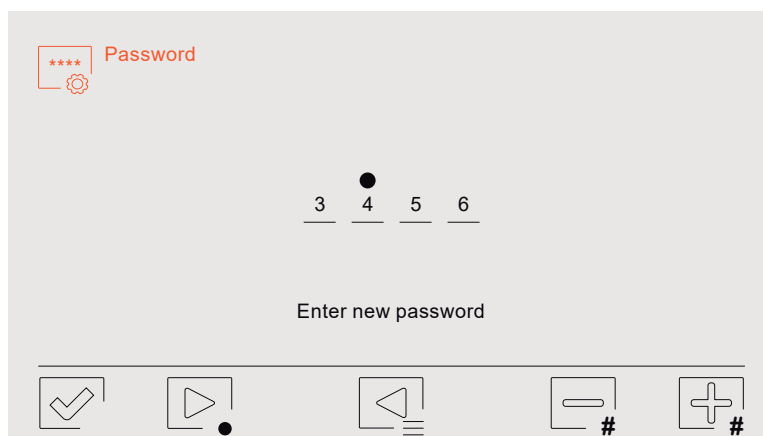
#### 7.4. Devices

In the “Devices” section we will be able to enable, if it were available to us, the panel of one call line PCM/G+. We will also be able to enable the lift control from the main screen of the monitor and link it with the access control to, in case of an opening presenting the keys on the RFID reader of the entry panel, activate the lift on the respective floors of the panel and the apartment.



#### 7.6. Password

To finish with the system settings menu, we will emphasise in the “Password” section which allows us to change the password to access the system settings of the monitor.





C/ Silici 13. Poligon Industrial Famadas  
08940 – Cornellà del Llobregat – Spain  
[golmar@golmar.es](mailto:golmar@golmar.es)  
Telf: +34 934 800 696  
[www.golmar.es](http://www.golmar.es)